

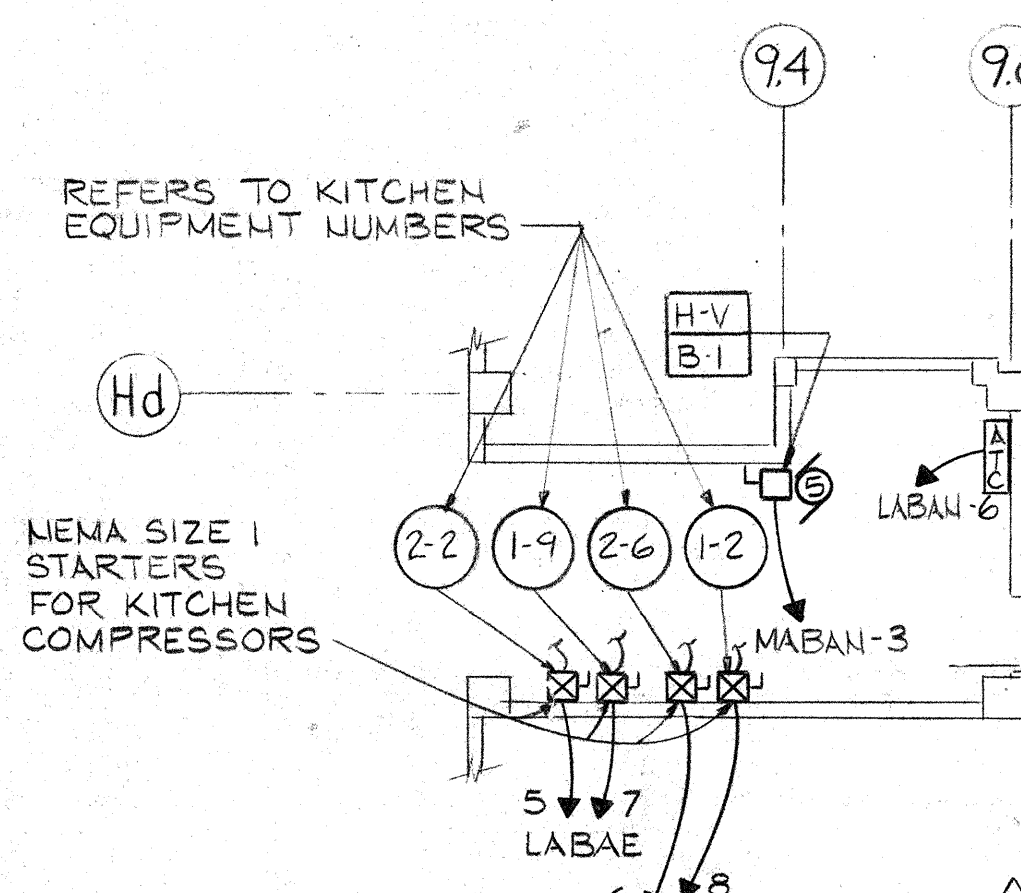
Ronald F. O'Brien, PE	Number	Date
-----------------------	--------	------

Drawing numt

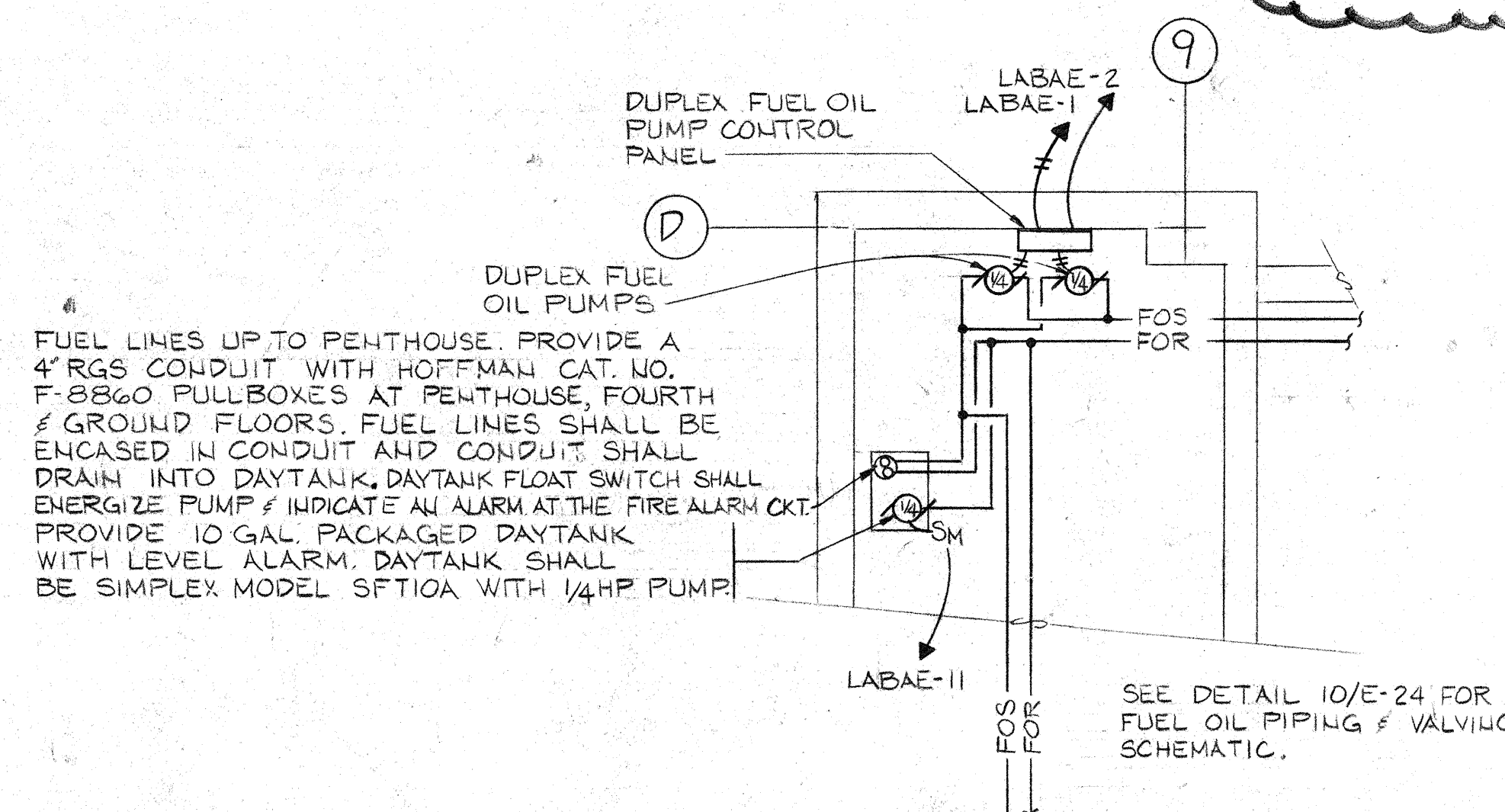
DBC A372



- 1) INSTALL 2-4" SPARE CONDUIT WITH DRAG LINE TO SHAFT AT COLUMN D-9. TERMINATE CONDUIT AT SECOND FLOOR, TYPICAL FOR TOTAL OF 8 CONDUITS.
- 2) PROVIDE 2"x14"x3'-0" LONG COPPER GROUNDING BUS BOLTED TO 2-12" COPPER GROUND RODS. TAP GROUND BUS FOR 1/4" O.D. GROUND LUGS AS REQUIRED. BUS SHALL BE 1' MOUNTED 12" AFF.
- 3) ALL CONDUITS, DUCTS AND PIPES THRU WALLS SHALL USE O-Z GEDNEY TYPE WSK (OR APPROVED EQUAL) WALL SEALS WITH MEMBRANE.



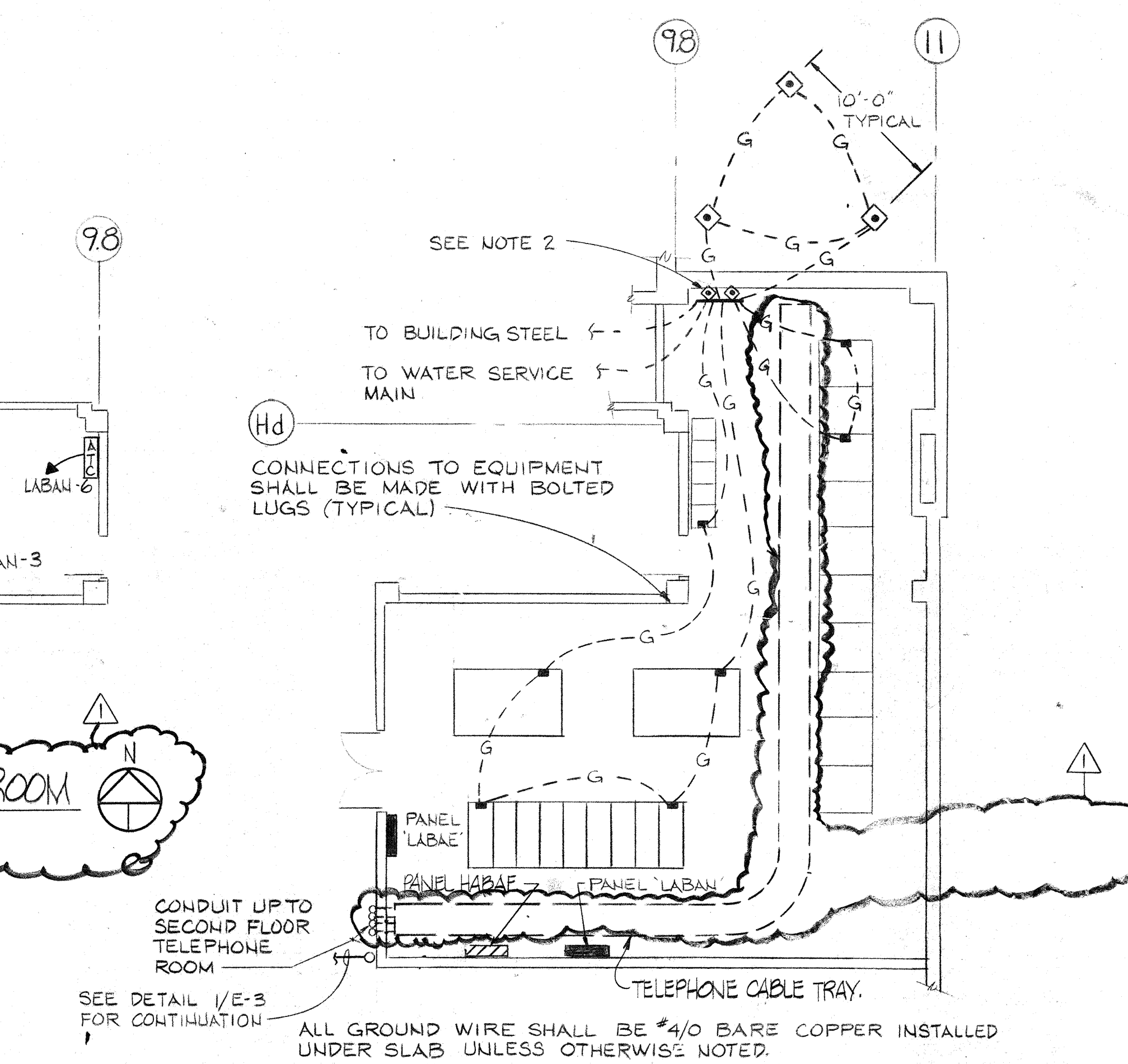
## 2 PARTIAL PLAN - MECHANICAL ROOM



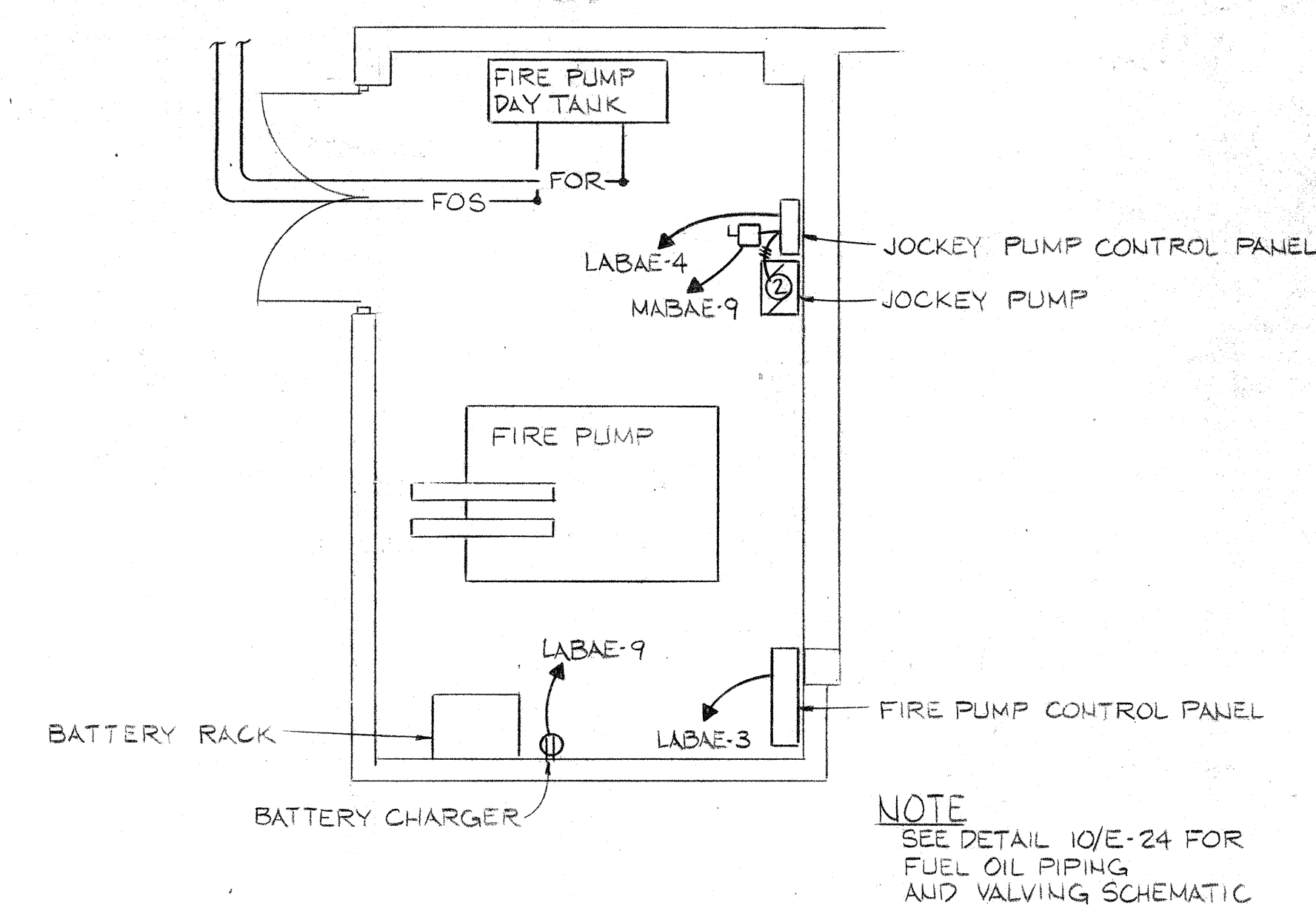
**5** PARTIAL PLAN - FUEL OIL PUMP ROOM  
SCALE: 1/4" = 1'-0"

- EQUIPMENT KEY

- 1 TERMINAL SECTION (ISK)
- 2 MAIN SWITCH-NORMAL (SKN) (N.C.)
- 3 TERMINAL SECTION (ISK)
- 4 MAIN SWITCH-BACK-UP (ISK) (N.O.)
- 5 METERING SECTION-UTILITY (ISK) (N.C.)
- 6 FUSED DISTRIBUTION SECTION (ISK)
- 7 FUSED DISTRIBUTION SECTION (ISK)
- 8 FUSED DISTRIBUTION SECTION (ISK)
- 9 FUSED DISTRIBUTION SECTION (ISK)
- 10 FUSED DISTRIBUTION SECTION (ISK)
- 11 FUSED DISTRIBUTION SECTION (ISK)
- 12 DISTRIBUTION SECTION (480V)
- 13 DISTRIBUTION SECTION (480V)
- 14 TIE CIRCUIT BREAKER (480V) (N.O.)
- 15 DISTRIBUTION SECTION (480V)
- 16 DISTRIBUTION SECTION (480V)
- 17 SPARE NUMBER
- 18 150 KA CAST RESIN TRANSFORMER
- 19 MAIN GROUND BREAKER (480V) (N.C.)
- 20 MAIN GROUND BREAKER (480V) (N.C.)
- 21 150 KA CAST RESIN TRANSFORMER
- 22 METERING SECTION-OWNER (ISK)



### 3 PARTIAL PLAN ELECTRIC ROOM EQUIPMENT GROUNDING SCALE: 1/8" = 1'-0"



#### 4. PARTIAL PLAN-FIRE PUMP ROOM