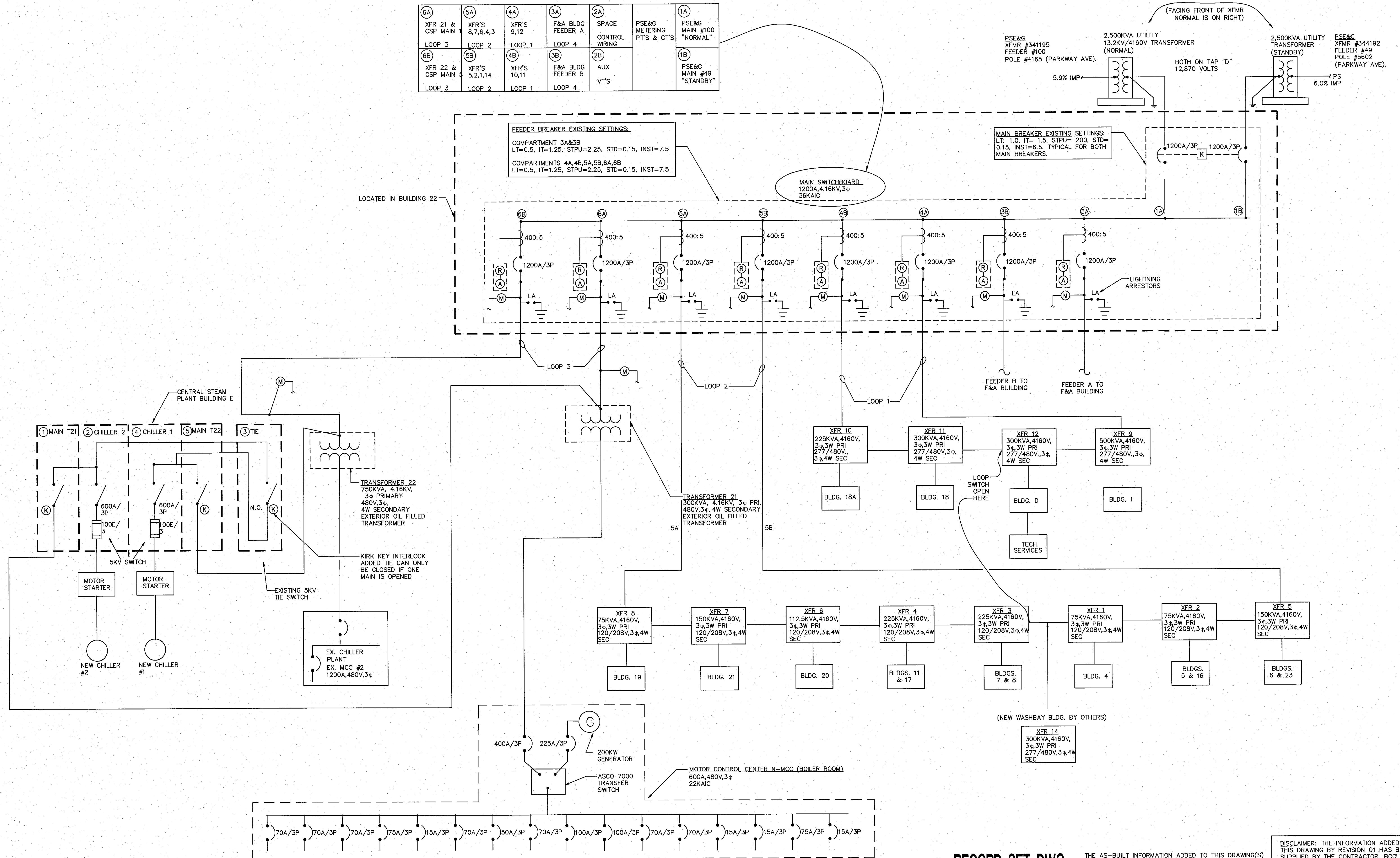


File Name: M:\Projects\State of NJ\11202-RECORD SET-Switchgear and Transformer Upgrade - NJ DOT\elec\11202E32.dwg  
Plotted on: Jul 22, 2014 - 11:11am Plotted by: kemp  
C:\C.C.C.L.T. JMC 2012  
ALL RIGHTS RESERVED  
Layout Tab: E32 Image:



OVERALL ONE-LINE DIAGRAM  
SCALE: NO SCALE

RECORD SET DWG.  
DATE JUNE 2014

THE AS-BUILT INFORMATION ADDED TO THIS DRAWING(S) HAS BEEN SUPPLIED BY THE CONTRACTOR(S). BIAGI, CHANCE, CUMMINS, LONDON, TITZER, INC. (BCCLT INC.) DOES NOT ASSUME THE RESPONSIBILITY FOR ITS ACCURACY OTHER THAN CONFORMITY WITH THE DESIGN CONCEPT AND GENERAL ADEQUACY OF THE AS-BUILT INFORMATION TO THE BEST OF BCCLT, INC. KNOWLEDGE.

DISCLAIMER: THE INFORMATION ADDED TO THIS DRAWING BY REVISION 01 HAS BEEN SUPPLIED BY THE CONTRACTOR. BCCLT INC. DOES NOT ASSUME RESPONSIBILITY FOR ITS ACCURACY.

F/A BUILDING SWITCHGEAR AND TRANSFORMER UPGRADE  
NEW JERSEY DEPARTMENT OF TRANSPORTATION  
TRENTON, NEW JERSEY

RECORD SET  
OVERALL ONE-LINE DIAGRAM

Biagi, Chance, Cummins, London, Titzer, Inc.  
Consulting Engineers

E3.2

COMM. NO. 11202 DRAWN BY BAK CHECKED BY JMF DATE 4/09/12